



Special points of interest

- Faculty Development - Population Health
- Scholarly Activities
- Compliments & e-Recognitions
- Faculty in the Spotlight
- Advocacy
- Tips & Resources
- CME Events



Inside this issue:

Milestones in Faculty Development	2
Tips & Resources	3
Milestones in Humanism and Professionalism	5
Milestones in Trainees & Faculty Scholarly Activities	6
Milestones in Child Advocacy Efforts	7
Milestones in Faculty National Achievements	7
Milestones in CME News	8



From the Editor

Medical Education Enters the Homestretch of the Academic Year

This **March** issue of *Milestones in Medical Education* highlights the milestones that occurred in the past two months and sets the stage for the next two months. In a Medical Education academic year, we are at the homestretch period of the year. This is the time when trainees' research projects start taking shape and getting presented at national meetings. Also, this is the time when graduating trainees start either getting ready to join the workforce in new jobs or plan for additional GME Training.

The Department of Medical Education, coordinators, and program directors are at the homestretch as well preparing for upcoming celebration events including Scholarship Week, Graduation, Orientation. As we finished several months of virtual interviewing for the Pediatric Residency Program, we are anxiously waiting for Match Day 2022 (March 18) when we solidify the incoming classes of residents and fellows and we start preparing for welcoming them in June & July.

The past two months have been marked with a surge in Omicron variant which affected

the Pediatric population more than other variants, particularly those young children under the age of recommended vaccination. We also experienced increased positivity amongst the vaccinated, boosted, and unvaccinated with the unvaccinated experiencing more severe disease. This highlighted the benefit of the vaccine especially the booster in these cases. Since then we have turned the corner and luckily we saw a precipitous drop in positivity and deaths. This comes at a great time when we are preparing for several homestretch events, we are seeing re-opening of the community, planned return of in-person meetings and live conferences, and opportunities for socializing and networking in academic medical conferences that many of our trainees have missed out on in the past two years.

In this issue of *Milestones in Medical Education*, we highlight several of the achievements of our Medical Education community of faculty and trainees including:

- ◆ Trainees compliments and e-recognitions by staff, peers, colleagues, and patients/parents
- ◆ NCH Trainees continue to showcase their scholarly work on the national stages
- ◆ NCH Faculty and trainees will have a strong presence at the 2022 Pediatric Academic Societies (PAS) meeting in April in Denver
- ◆ NCH Trainees and faculty continue to contribute to the peer-reviewed published literature
- ◆ Population Health is important to provide equitable care
- ◆ Medical Education CME offerings are part of the department's mission

I hope that you enjoy this *Milestones* issue. We look forward to the next 2 months where we unveil our newly matched residents and prepare for graduation of our class of 2022.

Rani S. Gereige, MD, MPH,
FAAP - DIO

*Want To Learn
More About
Population
Health?*

*Watch Grand
Round on*

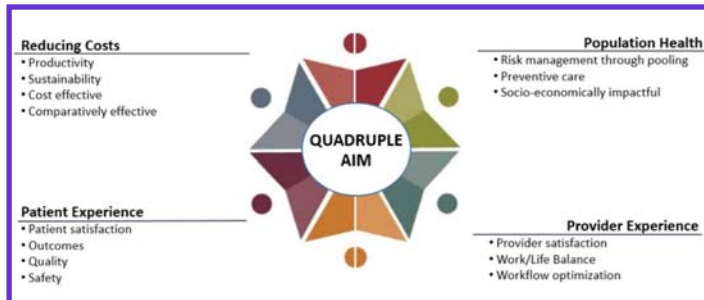


*Recorded on
10/8/2021*



Milestones in Faculty Development

Beyond the Individual Patient: Addressing Health Disparities by Incorporating Population Health Into Practice



What is Population Health?

Definition:

“The health and outcomes of a group of individuals, and the distribution of such outcomes within groups”. Population Health is part of the IHI Quadruple Aim.

Groups can include:

- ◆ Geographically contiguous populations
- ◆ Or Groups with certain characteristics (e.g. Ethnic group, disabled, prisoners, company employees)

Population Health considers interventions, beyond medical care, needed to keep a population healthy including: Access to jobs, healthy food, safe environment, and reasonable income and looks to address inequities within subgroups.

What are the Components of Population Health?

Three main components:

1. Health Outcomes
2. Health Determinants
3. Policies

What is Population Health Management?

Population Health Management is a systematic approach to ensure all members of a defined population receive appropriate preventive, chronic,

and transitional care. It identifies and addresses health care inequities among subgroups of population through screening for barriers to care (e.g. food insecurity, insufficient income, unsafe housing, neighborhood violence)

Population Health vs Population Health Management is equivalent to **Health vs Health Care**

What are the Components of Population Health Management?

Comprehensive Population Health Management includes:

THREE Foundational Elements:

1. Data Infrastructure
2. Team-Based Care
3. Community Engagement

SEVEN Key Activities:

1. Panel Management
2. Patient Risk Stratification
3. Care Management
4. Self-Management Support
5. Complex Care Management
6. Addressing Social Determinants of Health
7. Ensuring Health Equity

Determinants of Health

Include the following:

- ◆ Genetics
- ◆ Behavior

- ◆ Environmental & Physical Influences
- ◆ Medical Care
- ◆ Social Factors (Includes Economic & Social Conditions)

Social Determinants of Health

According to the **Healthy People 2030**; Social Determinants of Health describes the **understanding of the relationship between how population groups experience “place” & the impact of “place” on health.** This is fundamental to the social determinants of health including both social and physical determinants.

The Healthy People 2030 specifies **FIVE Key Areas** of Social Determinants of Health:

- ◆ **Economic Stability**
 - ⇒ Poverty
 - ⇒ Employment
 - ⇒ Food Insecurity
 - ⇒ Housing Instability
- ◆ **Education Access & Quality**
 - ⇒ High School Graduation
 - ⇒ Enrollment in Higher Education
 - ⇒ Language & Literacy
 - ⇒ Early Childhood Education & Development
- ◆ **Health Care Access & Quality**
 - ⇒ Access to Health Care
 - ⇒ Access to Primary Care
 - ⇒ Health Literacy
- ◆ **Neighborhood & Built Environment**
 - ⇒ Access to Foods that Support Healthy Eating Patterns
 - ⇒ Quality of Housing
 - ⇒ Crime & Violence
 - ⇒ Environmental Conditions
- ◆ **Social & Community Context**
 - ⇒ Social Cohesion
 - ⇒ Civic Participation
 - ⇒ Discrimination
 - ⇒ Incarceration

Milestones in Faculty Development (Cont'ed)

Beyond the Individual Patient: Addressing Health Disparities by Incorporating Population Health Into Practice

What Can Teaching Clinical Faculty Do?

Teaching faculty should demonstrate the value of Population Health and Population Health Management in achieving optimal outcomes for patient care through teaching and clinical care. Resources are provided below for teaching. The following are some clinical care-based ideas & suggestions to implement in clinical care and trainees continuity clinics:

- ◆ **Data:** Registries, Health System Data, HER
- ◆ **Team-based interdisciplinary care** approach including a core team and extended care team with defined roles
- ◆ **Community-engagement:** Aligning projects, care (inpatient/outpatient) with community health needs assessment and develop partnerships
- ◆ **Develop patient panels** and look at systems to identify gaps and ensure health care equity
- ◆ **Risk-stratify patients** by population subgroups, comorbidities, disease burden, or health care / ED utilization
- ◆ **Chronic complex care** management plans and pathways
- ◆ **Create EMR pathways** to collect social determinant of health information and use the data for resource utilization, referrals, and outcomes
- ◆ **Collect health equity data** and share outcome data by provider (resident/ faculty) and work on addressing inequities once identified
- ◆ **Include Population Health** in Medical School, Public Health Schools, and GME curricula
- ◆ **Population Health activities** can be linked to Value-Based Care, QI Pro-

jects/ MOC, PCMH Metrics, and other strategies.

AAP Resources

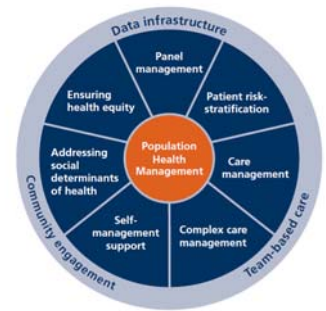
- [Early Childhood Adversity, Toxic Stress, & the Role of the Pediatrician: Translating Developmental Science into Lifelong Health](#) (2012, reaffirmed 2016) – Policy statement.
- [Addressing Food Insecurity: A Toolkit for Physicians](#) - Toolkit providing guidance on incorporating the food screening process into practice workflow, choosing the right tool, and intervening to help address food insecurity.
- [Poverty and Child Health](#) - AAP resources on the impact of poverty on children's health, including practice tips and advocacy ideas.
- [Trauma Toolbox for Primary Care](#) (2014) - Series designed to assist pediatric health care providers with the process of asking families about exposure to adverse childhood experiences or other traumatic events .
- [Avoiding the Unintended Consequences of Screening for Social Determinants of Health](#)
- [The EveryONE Project](#) - Initiative from the American Academy of Family Physicians to assist practices in addressing social determinants of health. The site includes a toolkit with numerous resources.

References

- ◆ Bodenheimer T, Syer S, Fair M, Shipman S. Teaching Residents Population Health Management. Association of American Medical Colleges (AAMC); Washington, DC. November 2019.
- ◆ [Equity, social determinants and public health programmespdf](#). Editors Erik Blas

and Anand Sivasankara Kurup. 2010, World Health Organization: Geneva.

- ◆ Commission on Social Determinants of Health (CSDH), [Closing the gap in a generation: health equity through action on the social determinants of health. Final report of the Commission on Social Determinants of Healthpdf](#). 2008, World Health Organization: Geneva.
- ◆ Hillemeier, M., Lynch, J., Harper, S., Casper, M., [Data Set Directory of Social Determinants of Health at the Local Levelpdf](#). 2004, Centers for Disease Control and Prevention, U.S. Department of Health and Human Services: Atlanta.
- ◆ Brennan Ramirez LK, Baker EA, Metzler M. [Promoting Health Equity: A Resource to Help Communities Address Social Determinants of Health](#). Atlanta: U.S. Department of Health and Human Services, Centers for Disease Control and Prevention; 2008.
- ◆ Hofrichter, R., Bhatia, R. (Eds.) [Tackling Health Inequities through Public Health Practice: Theory to Action](#). 2010, Oxford University Press.
- ◆ Raphael, D., ed. [Social determinants of health: Canadian perspectives](#). 2004, Canadian Scholars' Press Toronto.
- ◆ Marmot, M.G. and R.G. Wilkinson, [Social determinants of health](#). 2nd ed. 2006, Oxford ; New York: Oxford University Press. x, 366 p.



Population Health

vs Population

Health

Management

Equivalent to

Health vs Health

Care



Teaching Residents Population Health Management

November 2019



Milestones in Faculty Development - Tips & Resources

Tips & Resources for Researchers - Sample Size Calculation



Mr. Gabriel Cardenas, MPH, NCH Research Institute Data Analyst shared the following helpful tips and resources with all NCH Researchers:

Tip #1: SAMPLE COMPARISONS

- Once you have decided on a unique research idea, and you want to compare groups, the first thing you should do is a quick sample size calculation using the averages and standard deviations of the groups (maybe get from literature or look at some previous data), and what you would consider to be a meaningful difference between the group means (clinically significant).

- That should be a first step to see if the study can get enough people to see the difference you consider meaningful, if there is one, and thus find a statistically significant difference.

- Here are the links to a simple 2 group average comparison t-test sample size calculator

[Power/Sample Size Calculator \(ubc.ca\)](https://www.ubc.ca/power/sample-size-calculator)

- And here is a simple 2 group proportions comparison

[Comparing Two Proportions - Sample Size - Select Statistical Consultants \(select-statistics.co.uk\)](https://www.select-statistics.co.uk/comparing-two-proportions-sample-size-select-statistical-consultants)

If its anything harder than that the RAD group can calculate one for you.

Tip #2: DESCRIPTIVE STUDY

- If you're doing a descriptive study, you may still want to check your sample size; because the larger the sample size the more precise the estimated numbers you are reporting will be.
- For example, if you are going to report the rate of exacerbations, or the number of people having a symptom, or the average level of some lab reported value: you can put some number, lets just say randomly - 157 g/ml is what you observed. If your sample size is large, you could say: 157 +5 g/ml; but if your sample size is small you might only be able to report 157 +20 g/ml.

Save the Date

Class of 2022

Graduation

Friday June

10th 2022

Tips & Resources for Remote Workers

“When You’re Working, You’re Working” and When You’re Not, You’re Not

The pandemic has made remote work popular among businesses of all kinds. In many cases some company workers have not been physically in the office for almost 2 years, and for some workers, this may be the way work is going to continue being.

We know the perks of working in pajamas without having to worry about commute. While work-life balance is supposed to be great with remote work, but is it? Some of the reported drawbacks of remote work include: Hard to focus, no structure, lack of socialization, and the voices in your head telling you all the things that need to be done at home around you. In addition,

due to lack of structure, you are at the risk of working too much leading to burnout.

Here are few tips for remote workers to consider:

- ◆ Set boundaries around your work time and space so that when you are working, you are working .. And when you are not, you are not
- ◆ Create a dedicated workplace - AWAY and out of sight from distractions, everything, & everyone i.e. a place where you can shut the door
- ◆ Keep your normal routine as if you were going into the office (remember those



days?). Make a schedule and stick to it

- ◆ Set boundaries and structure. This includes:
 1. Don't do things during work hours that you wouldn't normally do when you are in the office
 2. Don't watch TV
 3. Don't play with your pets
 4. Don't blast the music

Obviously these things may occur during your breaks and may recharge you during that afternoon crash.

To learn more, watch this [video](#).



Milestones in Humanism and Professionalism

NCH Trainees Compliments and e-Recognitions



Ariella Barhen, MD (PICU Fellow)

Dr. Ariella Barhen received an e-Recognition from Ms Krystal Tapia; PICU RN for her display of the **NCHS Values**. Ms Tapia commented: *“Ariella is an outstanding provider! She deserves recognition for providing excellent care to the patients in the PICU consistently. Her attentiveness, her empathy, and her positive attitude makes a huge difference to the patient, the family, and those that have the pleasure of working with her. I want to say thank you and that all the small things she does and going the extra mile does not go unnoticed. Thank you”*. Congratulations Ariella!!!!

...tive attitude and was an important part of the team. She will make a great pediatric nephrologist”. Congratulations Eva on your commitment to excellent performance!!!



Eduardo Acosta, MD (PL3)

Eduardo Acosta received e-Recognition from Ms Serena Prado, RN for his display of **Improving Quality**. Ms Prado commented: *“I wanted to take the time to thank Dr. Acosta for being so supportive yesterday during my shift in 5T. He was available for me when I had questions regarding my patient, took the time to reach other specialists when I was unsuccessful, and also checked on me personally during a difficult time. He is a compassionate and thoughtful doctor. I know that he is impacting the patients and nurses lives daily. Thank you for taking the time out of your day, it made a big difference.”* Congratulations Eddie on an excellent job!!!



Andrea Montano Ballesteros, MD (PL2)

Dr. Andrea Montano Ballesteros received an e-Recognition from Dr. Jennifer Thompson, Adolescent Medicine Fellow for her **Excellent Performance**. Dr. Thompson commented: *“Andrea was an amazing resident. Always came in with a positive attitude and was an important part of the team. She will make a great PICU physician”*. Congratulations Andrea on a job well-done!!!!



Caleb Murray, DO (PICU Fellow)

Dr. Caleb Murray received an e-Recognition from Dr. Eric Tano (PL3) for his **Excellent Performance**. Dr. Tano commented: *“Caleb encourages teamwork and never puts the residents on an island. He is a strong example of what a fellow should be”*. Congratulations Caleb for your team spirit.



Erileen Garcia Roldan, MD (PL2)

Dr. Erileen Garcia Roldan an e-Recognition from Dr. Sobia Naeem, PEM Attending for her **Excellent Performance**. Dr. Navarro commented: *“Erileen has demonstrated excellent performance in our ED over the past few shifts, in particular she handled a very difficult mom with patience and used all available resources to be able to provide best care for this family. She went above and beyond without being frustrated. Thank You Erileen, we truly appreciate your hard-work and excellent attitude.”* Congratulations Erileen on an excellent job!!!



Freddy Martin, MD (PEM Fellow)

Dr. Freddy Martin received an e-Recognition from Ms Diane Chafin; Director of Accreditation & Regulatory for his display of the **NCHS Values**. Ms. Chafin commented: *“Thank you Dr. Martin for participating in yesterday's community-wide Code D-NBC simulated sulfur mustard exposure disaster drill! We appreciate your responsiveness to the ED trauma area and for taking the time to learn about our disaster drill exercises. Thank you”*. Congratulations Freddy on your display of the NCHS iCREATEWay!!!



Eva Glenn, MD (PL2)

Dr. Eva Glenn received and e-Recognition from Dr. Jennifer Thompson ; Adolescent Medicine Fellow for her **Excellent Performance**. Dr. Thompson commented: *“Eva was an amazing resident. Always came in with a posi-*



Milestones in Trainees & Faculty Scholarly Activities

NCH Trainees & Faculty Continue to Disseminate Their Scholarly Work in Print & on National Stages

Publications - Hot Off The Press!!!

Drs. Jerry Cherry (Pediatric Dentistry Resident Alumnus - Class of 2021) and his mentor **Dr. Vanessa Freitas** were notified that their manuscript titled: **"Comparison of Cavity Preparation Times Using Conventional High-Speed Versus Er,Cr:YSGG Laser"** was accepted for publication in *Pediatric Dentistry* journal. Congratulations!

Drs. Jacklyn Smith (PL3), **Gabriel Mandel** (PL3) and their faculty mentors were notified that their manuscript titled: **"Multifocal and multiphasic Demyelinating Lesions After Radiation for Ependymoma in a Pediatric Population"** was accepted for publication in the *Journal of Child Neurology*. Congratulations!!

Dr. Niveditha Balakumar (PICU Fellowship Alumnus) and her faculty mentors **Dr. Totapally** and **Dr. Sendi** were notified that their manuscript titled: **"Epidemiology and Outcomes of Neonatal Hemophagocytic Lymphohistiocytosis"** was accepted for publication in *Frontiers in Pediatrics* Journal. Congratulations!!

Dr. Daniel Urschel (Allergy-Immunology Fellowship Alumnus - Class of 2021) and his mentor **Dr. Hernandez-Trujillo** had several abstract reviews published in the *Pediatrics* supplement 3; December 2021. Congratulations!!

National Presentations!!!

Dr. Pedro Piccinini (Craniofacial Plastic Surgery Fellow) was notified of acceptance of the following abstracts for presentation:

- ◆ Abstract titled: **"Osteoplastic Techniques of Use in the Treatment of Chin Deformities"** was accepted for Resident/Fellow Competition presentation at The Rhinoplasty Society Annual Meeting on April 2022 in San Diego, CA.
- ◆ Abstract titled: **"Saline Aspiration Negative Intravascular Test: Mitigating Risk with Facial Fillers"** was accepted for an oral presentation at The Aesthetic Meeting 2022 to be held in San Diego April 22-24; 2022.
- ◆ Abstract titled: **"Facial Aesthetic Procedures After Radiation"** was accepted for an oral presentation at The Aesthetic Meeting 2022 to be held in San Diego April 22-24; 2022.

Congratulations Pedro on these great achievements!

Strong Presence Expected for NCH at the 2022 PAS meeting

This year, NCH trainees and Faculty will be having a strong presence at the April 2022 **Pediatric Academic Societies (PAS)** meeting in Denver, CO. The following abstracts were accepted for presentation:

1. **Totapally BR, Diaz-Barbosa M, Sasaki J, Jayakar A, Sendi P, Soler D, Espinal PS, Salyakina D, Jayakar P.** **"RAPID Whole-Genome Sequencing in Acutely Ill Children: A Single Pediatric Center Experience"**.
2. **Barhen A, Sendi P, Martinez P, De Angulo G, Totapally BR.** **"Hemorrhagic Complications and Outcomes of Children with Acute Promyelocytic Leukemia at Initial Presentation: A Multicenter Cohort Study"**.
3. **Burns JE, Thurm C, Antoon JW, Grijalva CG, Hersh AL, Hester G, Korn E, Reyes MA, Shah SS, Totapally B, Teufel RJ.** **"COVID-19 Medications and Adherence to Treatment Guidelines in Hospitalized Children"**.
4. **Sendi P, Nadiger M, Bhalla U, Martinez P, Totapally BR.** **"A Multicenter study of hospital course, resource utilization, and outcomes of children with COVID-19 infection and pre-existing conditions"**.
5. **Philipson G, Alvira-Arill G, Ryder J, Totapally BR.** **"Evaluation of Pharmacokinetics and Dosing Strategies of Antithrombin III in Neonatal Patients Undergoing Extracorporeal Membrane Oxygenation."**
6. **Totapalli S, Sendi P, Totapally B.** **"Epidemiology and Outcomes of Children Hospitalized with Adenovirus in the US from 1997-2016"**.

Save the Date
The 13th Annual
Scholarship Week
Starting the Week
of May 31st 2022
(Submission
Information
Coming Soon!!!)



Milestones Trainees & Faculty Scholarly Activities (Cont'ed)

NCH Trainees & Faculty Continue to Disseminate Their Scholarly Work in Print & on National Stages

7. **Rodriguez A**, Gardner C, **Nadiger M**, **Totapally BR**. "Vitamin D levels and outcomes in critically ill children".
8. **Totapally BR**, **Sachdeva R**. "Validation of All Patient Refined-Diagnosis Related Group (APR-DRG) Risk of Mortality Score as a Severity Adjustor in Children".
9. **Reyes M**. "Temporal Trends in Low-Value Care Delivery Among US Children's Hospitals". (Oral Presentations)
10. **Tano E**, **Napky P**, **Cavalcante R**, **Diaz-Barbosa M**, **Vallerino D**, **Cellery V**, **Miranda LF**, **Acosta A**, **Perez J**, **Tano A**, **Cunill-De Sautu B**, and **Llanos A**. "Implementing a Post-Discharge Telemedicine Visit to Improve Transition of Care from the NICU to Home in a Free Standing Children's Hospital: A Pediatric Resident Quality Improvement Initiative".
11. **Manier Z**. "Impact of Pediatric Emergency Department Zoning During the COVID-19 Pandemic"
12. **Tano S**. "The Systemic Inflammatory Response Syndrome is a Limited Predictor of Bacteremia in Pediatric Emergency Department Patients".
13. **Reynolds-Herbst T**. "The association between early systemic corticosteroid therapy and hospital length of stay in patients with Multisystem Inflammatory Syndrome in Children (MIS-C)".



PUBLICATIONS PRESENTATIONS

Milestones in Child Advocacy Efforts

NCH Residents Raise Funds for Children in Ukraine

The pediatric residency program **Advocacy & Wellness Committees** participated in a bake sale to raise funds to support Ukraine. In one day, the Committees raised **\$703**. The Committees also shared with the trainees a list of legitimate charities that can be used to support Ukraine including:

- **Red Cross Ukraine:** <https://redcross.org.ua/en/donate>
- **Unicef Ukraine:** <https://www.unicef.org/ukraine/en/donate-now>
- **Voices of Children:** <https://voices.org.ua/en/donat/>
- **Nova Ukraine:** <https://novaukraine.org/donate/>
- **United Help Ukraine:** <http://unitedhelukraine.org>

We are very proud of our trainees for their humanism and advocacy for children.



Milestones in Faculty National Achievements

Faculty in the Spotlight - Dr. Hernandez-Trujillo

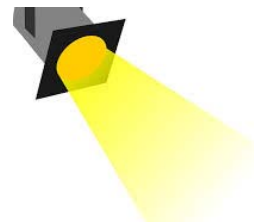
National Committee

Dr. Hernandez-Trujillo (Allergy-Immunology Fellowship Director) was elected to serve as the Pediatric Councilor for in the AAAAI Program Directors' Assembly Executive Committee for 2022-2024 election term. Congratulations Dr. Hernandez-Trujillo on this national appointment.

Podcast

Dr. Hernandez-Trujillo (Allergy-Immunology Fellowship Director) has developed podcasts on the topic of **Healthcare Disparities in Allergy-Immunology**. These podcasts have been developed in collaboration with the American College of Allergy, Asthma, & Immunology and can be accessed at: <https://podcasts.apple.com/us/podcast/allergytalk/id1465139750>. Congratulations!

munology and can be accessed at: <https://podcasts.apple.com/us/podcast/allergytalk/id1465139750>. Congratulations!



Faculty Spotlight

Milestones in CME News

Upcoming NCH CME Events

Registration opened for the **57th Virtual Annual Pediatric Postgraduate Course (PPGC)** - Virtual Education

Soaring to the Clouds. The course will be streamed live on **April 2, 3 2022** with access of the attendees to the recorded

course for 6 months. The course will provide 10 Hours of CME Credits and 10 Points of ABP MOC part 2 Points. Register today at www.ppgcpij.com.



VIRTUAL EDUCATION SOARING TO THE CLOUDS

- Adverse Childhood Events on Children
- COVID-Associated orphanhood
- Palliative Care for the Medical Home
- Allergy Testing for the Medical Home
- Common Skin Infections
- Cases I Learned From
- Sudden Death in the Young
- Sleep Disorders
- Climate Change and Impact on Health
- New Sepsis Guidelines
- COVID-19 Vaccines
- Infection Prevention Office Readiness
- COVID-Associated Myocarditis
- Innovative Practice Models

JOIN US ONLINE!
Launching April 2 & 3, 2022 (Live-Virtual)
Registrants will have Content Access for 6 months

SAVE THE DATE
Registration Will Open In Mid February

Online Only
Virtual Conference
Log In From Anywhere

PART 2 MOC
APPROVED BY THE ABP AS A PART 2 ACTIVITY FOR GENERAL PEDIATRICS MAINTENANCE OF CERTIFICATION (MOC) - 10 points

Accreditation Statement: Nicklaus Children's Hospital is accredited by the Accreditation Council for Continuing Medical Education to provide continuing medical education for physicians.
Designation Statement: Nicklaus Children's Hospital designates this live activity for a maximum of 10 ABP PBA Category 1 Credit(s). Physicians should claim only the credit commensurate with the extent of their participation in the activity.
Faculty/Planner Disclosure Policy: In accordance with the Accreditation Council for Continuing Medical Education's Standards for Integrity & Independence in Accredited Continuing Education, all planners, teachers, and authors involved in the development of CME content are required to disclose to the accredited provider their relevant financial relationships. Relevant financial relationships will be disclosed to the activity audience.

The **25th Annual General Pediatrics Review & Self Assessment (GPRSA)** and the **2nd Annual Pediatric Hospital Medicine Self Assessment Courses (PHMSA)** are scheduled to take place in-person **May 12-15; 2022** at the W Hotel in Fort Lauderdale. Reg-

istration will open soon. Live course registration include: (1) Access to the recorded courses for 6 months (2) ARS question sessions (3) CME Credits & ABP MOC Part 2 Points (4) Pictures of the Day (GPRSA Only) (5) Hands-on Workshop (PHMSA Only).

Both courses will be released for video-on-demand a month later but **ONLY-VIRTUAL** registration for the recorded content will include only the core lectures and CME Credits. (No MOC, No Practice Questions or Pictures). Live Course Registration opening soon!!!

Nicklaus Children's Hospital

2ND ANNUAL PEDIATRIC HOSPITAL MEDICINE REVIEW AND SELF-ASSESSMENT

Save the Date!
May 12-15, 2022
W Fort Lauderdale
401 N. Fort Lauderdale Beach Blvd.
Fort Lauderdale, FL 33304

Meet us on the Beach

- Comprehensive intensive review of Pediatric Hospital Medicine (PHM)
- Aimed at preparing for the initial PHM board certification
- Board style questions using online pre and post self assessment and audience response
- Diverse teaching modalities to meet all learners' needs
- Overnight resort hotel in beautiful Fort Lauderdale, Florida
- Competitive hotel rates

Sign-up for updates at
nicklauschildrens.org/phmsa

PART 2 MOC

Accreditation Statement: Nicklaus Children's Hospital is accredited by the Accreditation Council for Continuing Medical Education to provide continuing medical education for physicians.
Designation Statement: Nicklaus Children's Hospital designates this live activity for a maximum of 10 ABP PBA Category 1 Credit(s). Physicians should claim only the credit commensurate with the extent of their participation in the activity.
Faculty/Planner Disclosure Policy: In accordance with the Accreditation Council for Continuing Medical Education's Standards for Integrity & Independence in Accredited Continuing Education, all planners, teachers, and authors involved in the development of CME content are required to disclose to the accredited provider their relevant financial relationships. Relevant financial relationships will be disclosed to the activity audience.

Nicklaus Children's Hospital

25TH ANNUAL GENERAL PEDIATRIC REVIEW & SELF-ASSESSMENT

Let's Study on the Beach!

May 12-15, 2022
W Fort Lauderdale
401 N. Fort Lauderdale Beach Blvd.
Fort Lauderdale, FL 33304

Sign-up for updates at
www.nich.edu

- Comprehensive intensive review of general and subspecialty pediatrics
- Well-established review with 25 years of national and international track record
- Excellent board pass rate of previous attendees
- Over 120 questions using online pre and post self-assessment
- Sessions covering all of the core topics in pediatrics
- Access to the parts of the handouts from all speaker presentations
- A post-test of Multiple Choice Questions for MOC Credit (2 attempts allowed to reach Passing Score)
- Immediate feedback on each question with teaching pearls provided after submission of the answers

PART 2 MOC

Accreditation Statement: Nicklaus Children's Hospital is accredited by the Accreditation Council for Continuing Medical Education to provide continuing medical education for physicians.
Designation Statement: Nicklaus Children's Hospital designates this live activity for a maximum of 10 ABP PBA Category 1 Credit(s). Physicians should claim only the credit commensurate with the extent of their participation in the activity.
Faculty/Planner Disclosure Policy: In accordance with the Accreditation Council for Continuing Medical Education's Standards for Integrity & Independence in Accredited Continuing Education, all planners, teachers, and authors involved in the development of CME content are required to disclose to the accredited provider their relevant financial relationships. Relevant financial relationships will be disclosed to the activity audience.



The 2022 VIRTUAL 13th Annual Scholarship Week



The Week of May 31-June 3rd, 2022



Organized by
Nicklaus Children's Hospital



DEPARTMENTS OF MEDICAL EDUCATION, NURSING, & THE RESEARCH INSTITUTE

Medical Education Birthdays

March

Daniela Aguilar Abisad	2
Evelina Dedic	2
Maricarmen Dionisio-Santos	9
Zara Zaidi	11
Saleh Alsulami	14
Sandra Rios Melendez	17
Paulina Gines	19
Louis Durkac	24
Patricio Lau	26
Lorein Moya-Rodriguez	29



April

Ashley Fonseca	8
Eliana Sanchez	11
Dionne May	11
Elisa Prebble	14
Pedro Piccinini	15
Eilaf Fallatah	16
Camila De Avila	16
Daniel Torres	21
Rodrigo Cavalcante	24
Najveen Alvi	24
Nicolas Ortiz	25
Zoe Underill	27
Zachary Manier	27
Yatyng Chang	29



Department of Medical Education
3100 SW 62 Avenue
Miami, FL 33155

Phone: 305-669-5873 | Fax: 305-669-6531
CME@Nicklaushealth.org
nicklauschildrens.org/medicaleducation

Milestones in Medical Education
is the MCHS/Nicklaus Children's
Hospital Medical Education Newsletter

Like us on Facebook



Follow us on Twitter



To Teach is To Touch a Life Forever